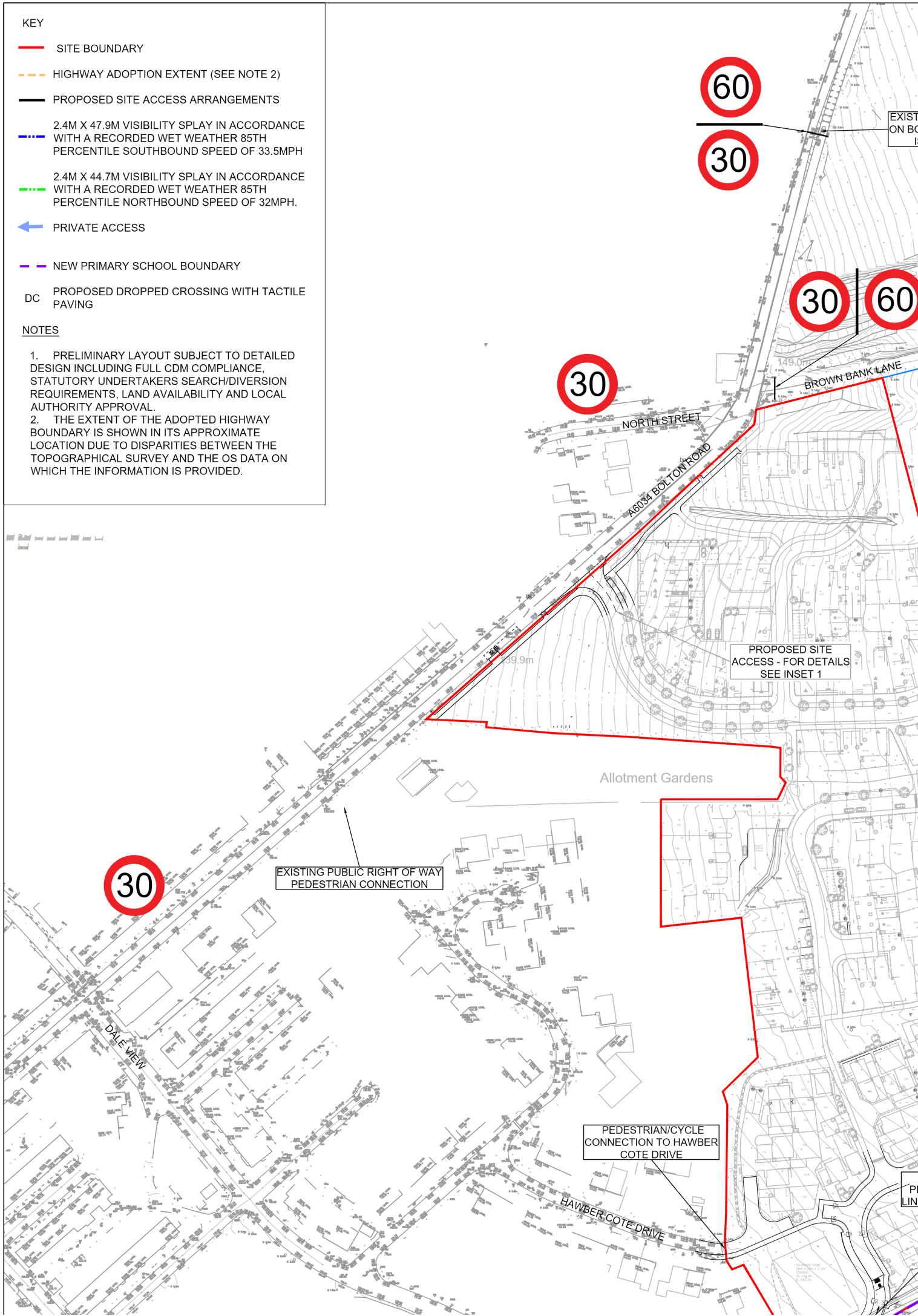


KEY

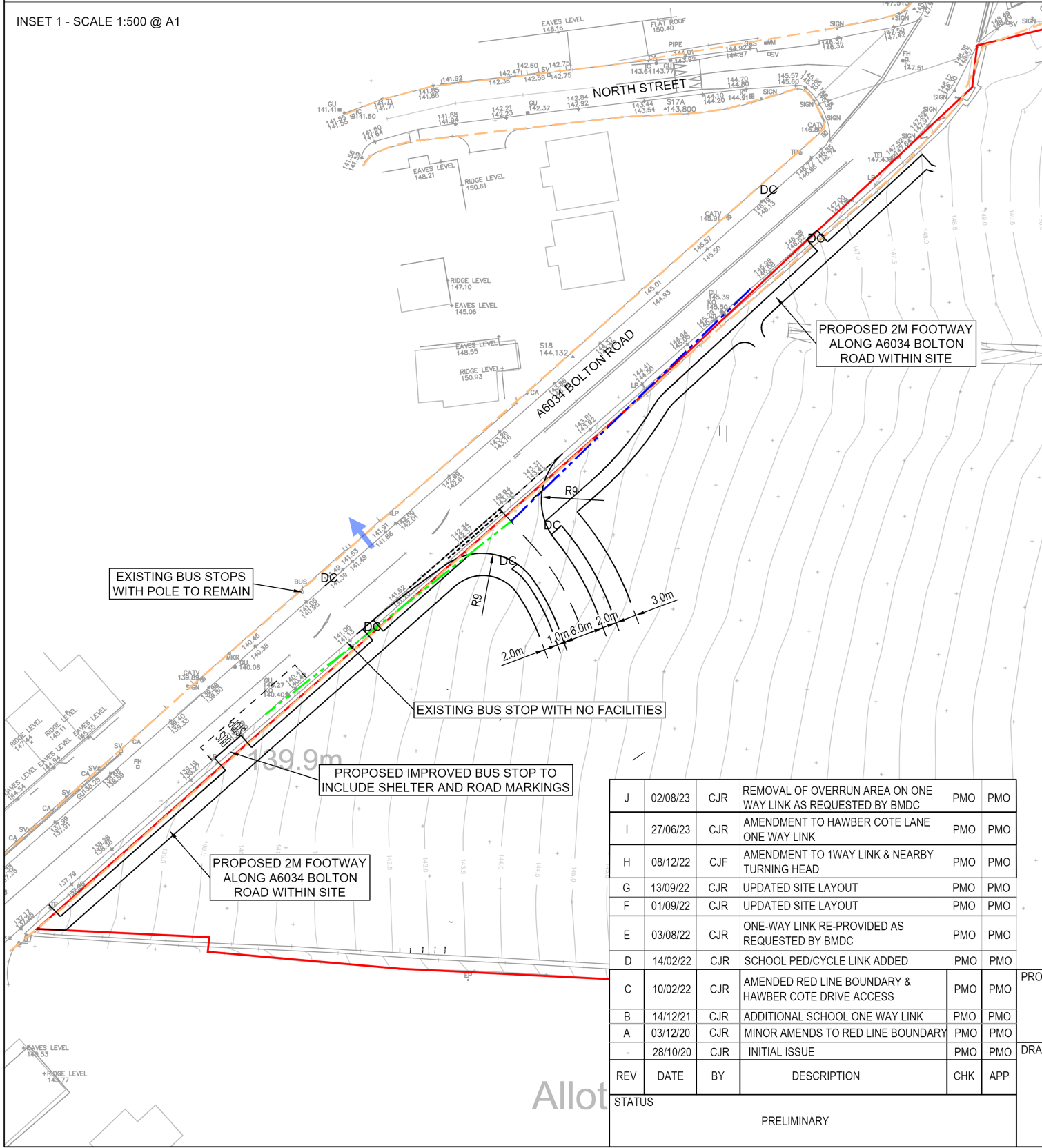
- SITE BOUNDARY
- - - HIGHWAY ADOPTION EXTENT (SEE NOTE 2)
- PROPOSED SITE ACCESS ARRANGEMENTS
- · - · - 2.4M X 47.9M VISIBILITY SPLAY IN ACCORDANCE WITH A RECORDED WET WEATHER 85TH PERCENTILE SOUTHBOUND SPEED OF 33.5MPH
- · - · - 2.4M X 44.7M VISIBILITY SPLAY IN ACCORDANCE WITH A RECORDED WET WEATHER 85TH PERCENTILE NORTHBOUND SPEED OF 32MPH.
- ← PRIVATE ACCESS
- - - NEW PRIMARY SCHOOL BOUNDARY
- DC PROPOSED DROPPED CROSSING WITH TACTILE PAVING

NOTES

1. PRELIMINARY LAYOUT SUBJECT TO DETAILED DESIGN INCLUDING FULL CDM COMPLIANCE, STATUTORY UNDERTAKERS SEARCH/DIVERSION REQUIREMENTS, LAND AVAILABILITY AND LOCAL AUTHORITY APPROVAL.
2. THE EXTENT OF THE ADOPTED HIGHWAY BOUNDARY IS SHOWN IN ITS APPROXIMATE LOCATION DUE TO DISPARITIES BETWEEN THE TOPOGRAPHICAL SURVEY AND THE OS DATA ON WHICH THE INFORMATION IS PROVIDED.



INSET 1 - SCALE 1:500 @ A1



J	02/08/23	CJR	REMOVAL OF OVERRUN AREA ON ONE WAY LINK AS REQUESTED BY BMDC	PMO	PMO
I	27/06/23	CJR	AMENDMENT TO HAWBER COTE LANE ONE WAY LINK	PMO	PMO
H	08/12/22	CJF	AMENDMENT TO 1WAY LINK & NEARBY TURNING HEAD	PMO	PMO
G	13/09/22	CJR	UPDATED SITE LAYOUT	PMO	PMO
F	01/09/22	CJR	UPDATED SITE LAYOUT	PMO	PMO
E	03/08/22	CJR	ONE-WAY LINK RE-PROVIDED AS REQUESTED BY BMDC	PMO	PMO
D	14/02/22	CJR	SCHOOL PED/CYCLE LINK ADDED	PMO	PMO
C	10/02/22	CJR	AMENDED RED LINE BOUNDARY & HAWBER COTE DRIVE ACCESS	PMO	PMO
B	14/12/21	CJR	ADDITIONAL SCHOOL ONE WAY LINK	PMO	PMO
A	03/12/20	CJR	MINOR AMENDS TO RED LINE BOUNDARY	PMO	PMO
-	28/10/20	CJR	INITIAL ISSUE	PMO	PMO
REV	DATE	BY	DESCRIPTION	CHK	APP

STATUS: PRELIMINARY